

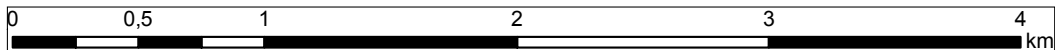


Legend

-  Boundaries of the area covered by the decision on environmental conditions
-  Designed Works Contract area



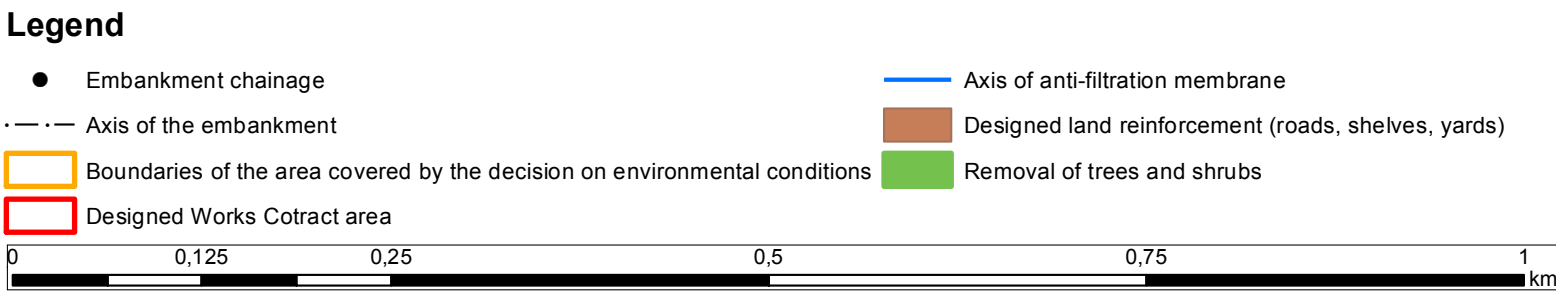
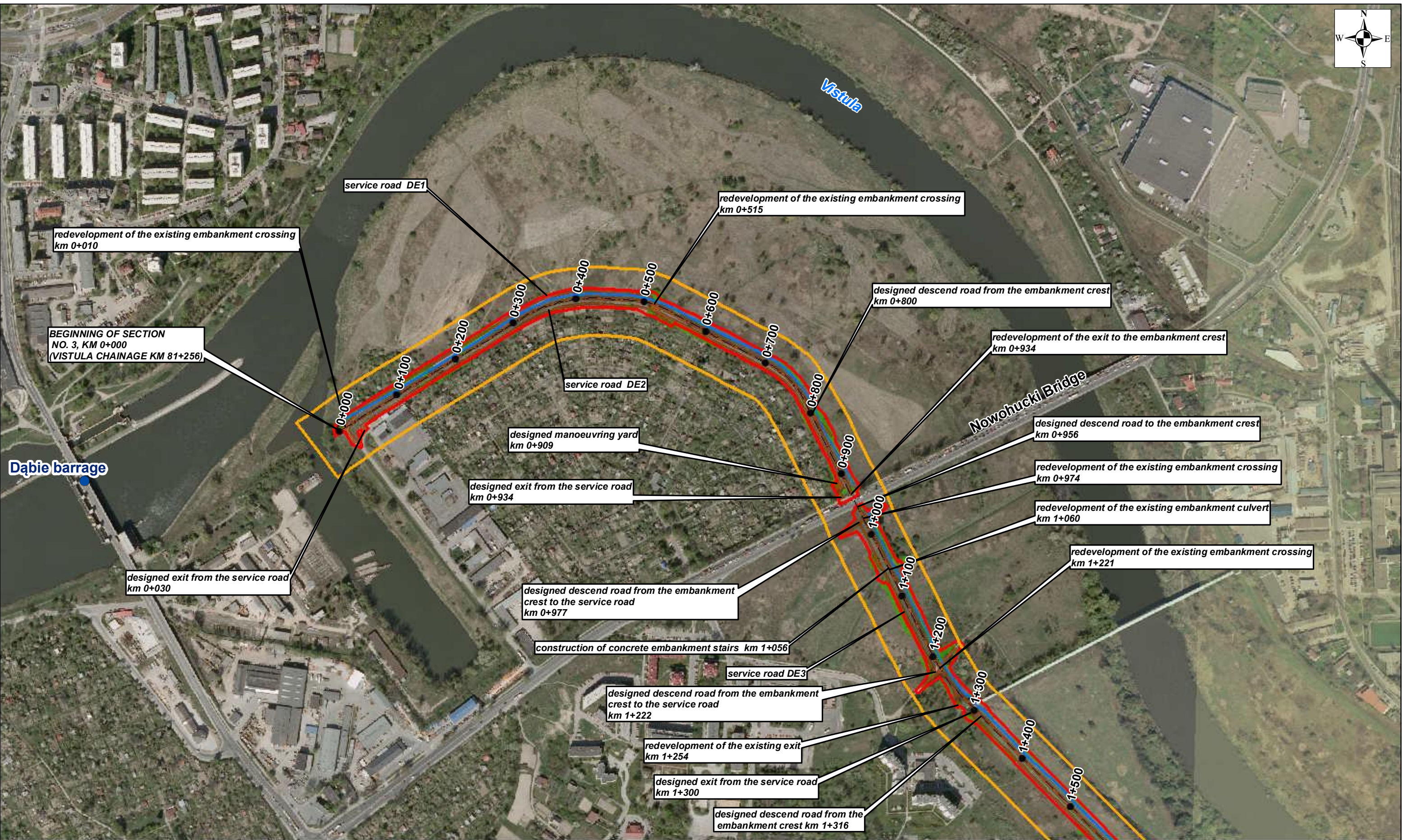
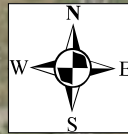
Appendix no. 10: Map with location of the Contracts' elements
INDEX OF SHEETS

Contract 3A.1 Modernization of Vistula embankments in Cracow
Works Contract 3A.1/1

- Section 1** - The left embankment of the Vistula river from Wanda bridge to the Przewóz barrage, including the backwater embankment of the Dłubnia river - Sheet 4, 5, 6
- Section 2** - The left embankment of the Vistula river from Przewóz barrage to Suchy Jar - Sheet 7, 8

Works Contract 3A.1/2

- Section 3** - The right embankment of the Vistula river from Dąbie to the Przewóz barrage - Sheet 1, 2, 3, 4, 6, 7



SHEET 1 **Appendix no. 10: Map with location of the Contracts' elements**

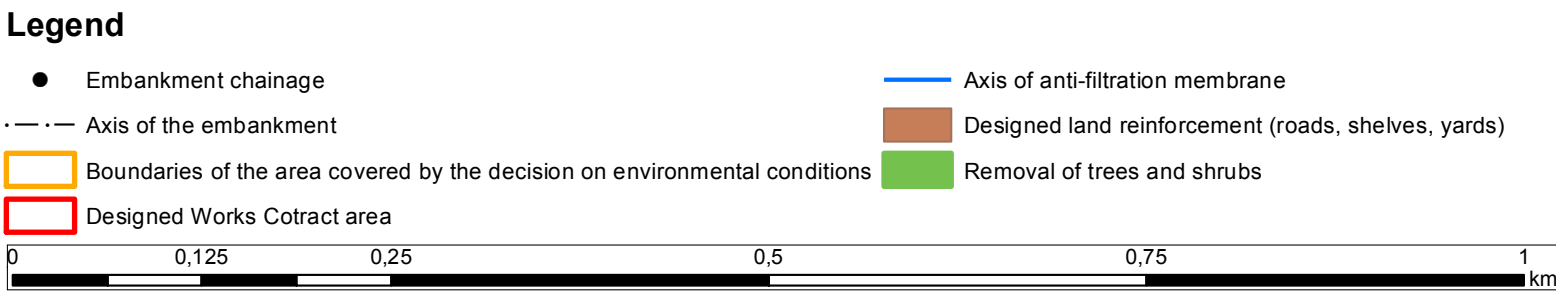
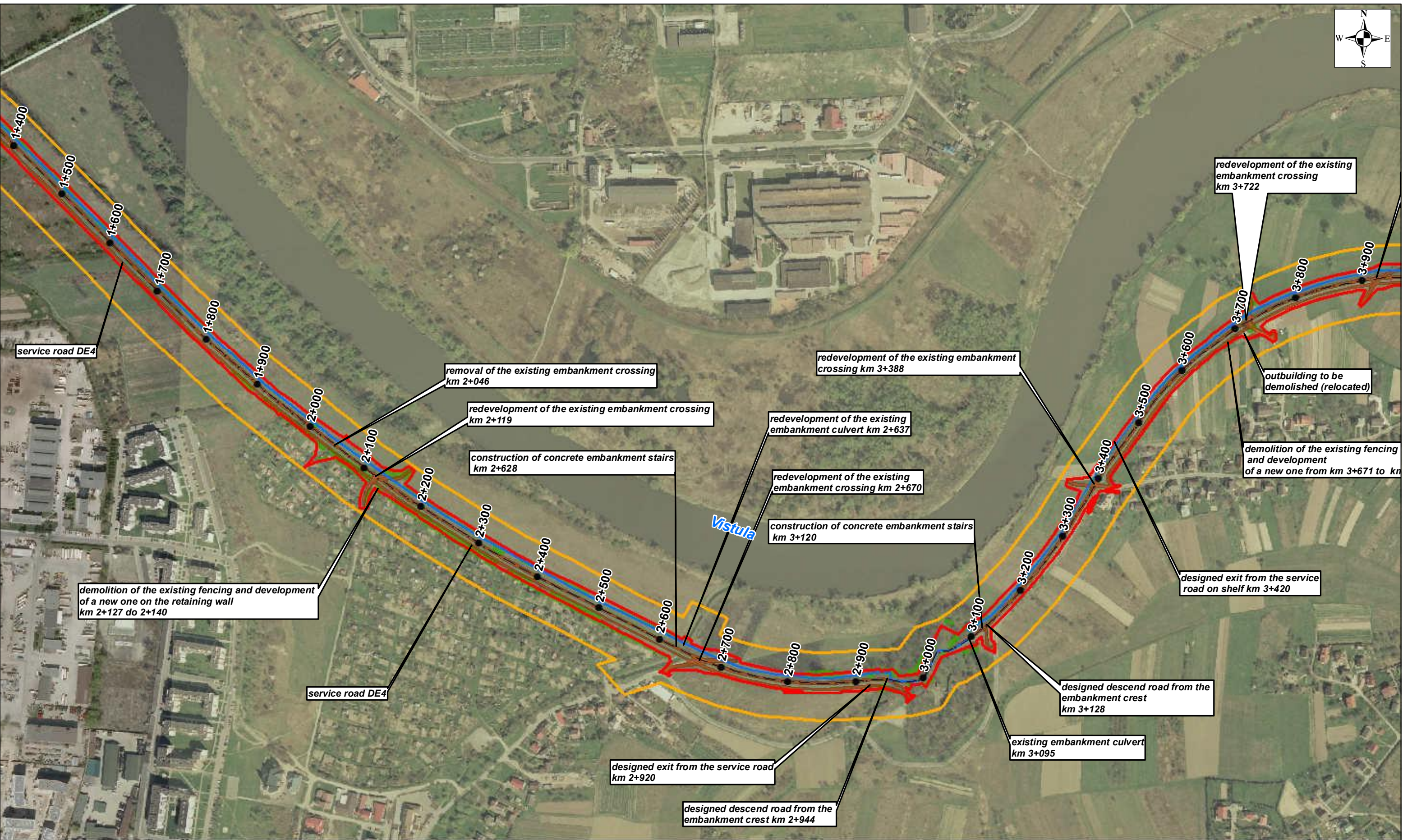
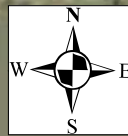
Contract 3A.1 Modernization of Vistula embankments in Cracow
Works Contract 3A.1/1

Section 1 - The left embankment of the Vistula river from Wanda bridge to the Przewóz barrage, including the backwater embankment of the Dłubnia river - Sheet 4, 5, 6

Section 2 - The left embankment of the Vistula river from Przewóz barrage to Suchy Jar - Sheet 7, 8

Works Contract 3A.1/2

Section 3 - The right embankment of the Vistula river from Dąbie to the Przewóz barrage - Sheet 1, 2, 3, 4, 6, 7



SHEET 2 **Appendix no. 10: Map with location of the Contracts' elements**

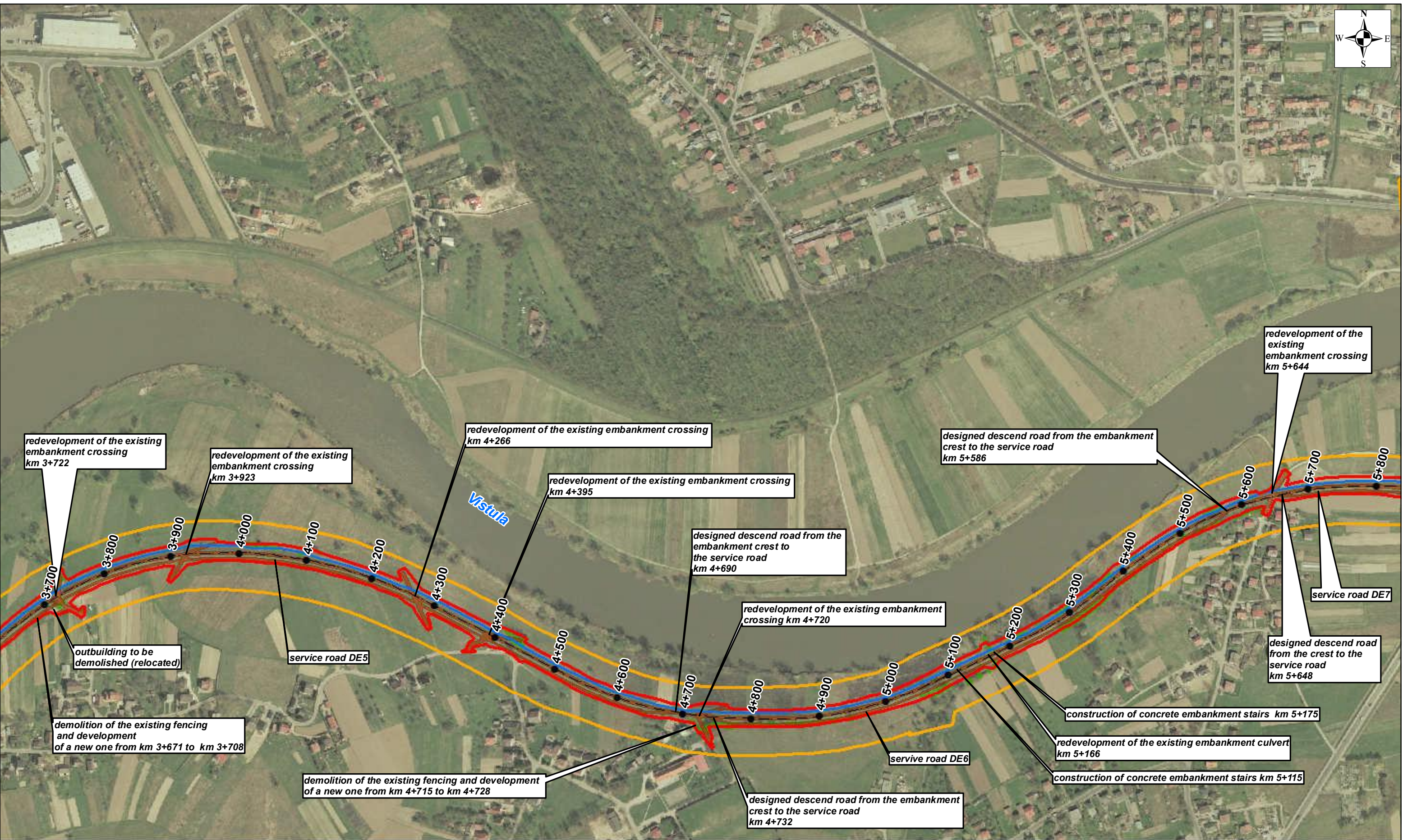
Contract 3A.1 Modernization of Vistula embankments in Cracow
Works Contract 3A.1/1

Section 1 - The left embankment of the Vistula river from Wanda bridge to the Przewóz barrage, including the backwater embankment of the Dłubnia river - Sheet 4, 5, 6

Section 2 - The left embankment of the Vistula river from Przewóz barrage to Suchy Jar - Sheet 7, 8

Works Contract 3A.1/2

Section 3 - The right embankment of the Vistula river from Dabie to the Przewóz barrage - Sheet 1, 2, 3, 4, 6, 7



Legend

- Embankment chainage
- · — Axis of the embankment
- ▭ Boundaries of the area covered by the decision on environmental conditions
- ▭ Designed Works Cotract area
- Axis of anti-filtration membrane
- ▭ Designed land reinforcement (roads, shelves, yards)
- ▭ Removal of trees and shrubs

00,1250,250,50,751

km

SHEET 3

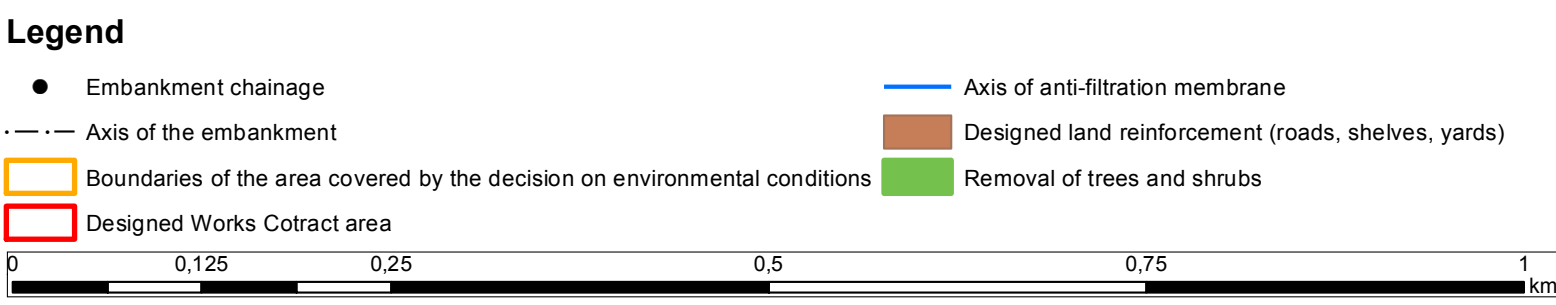
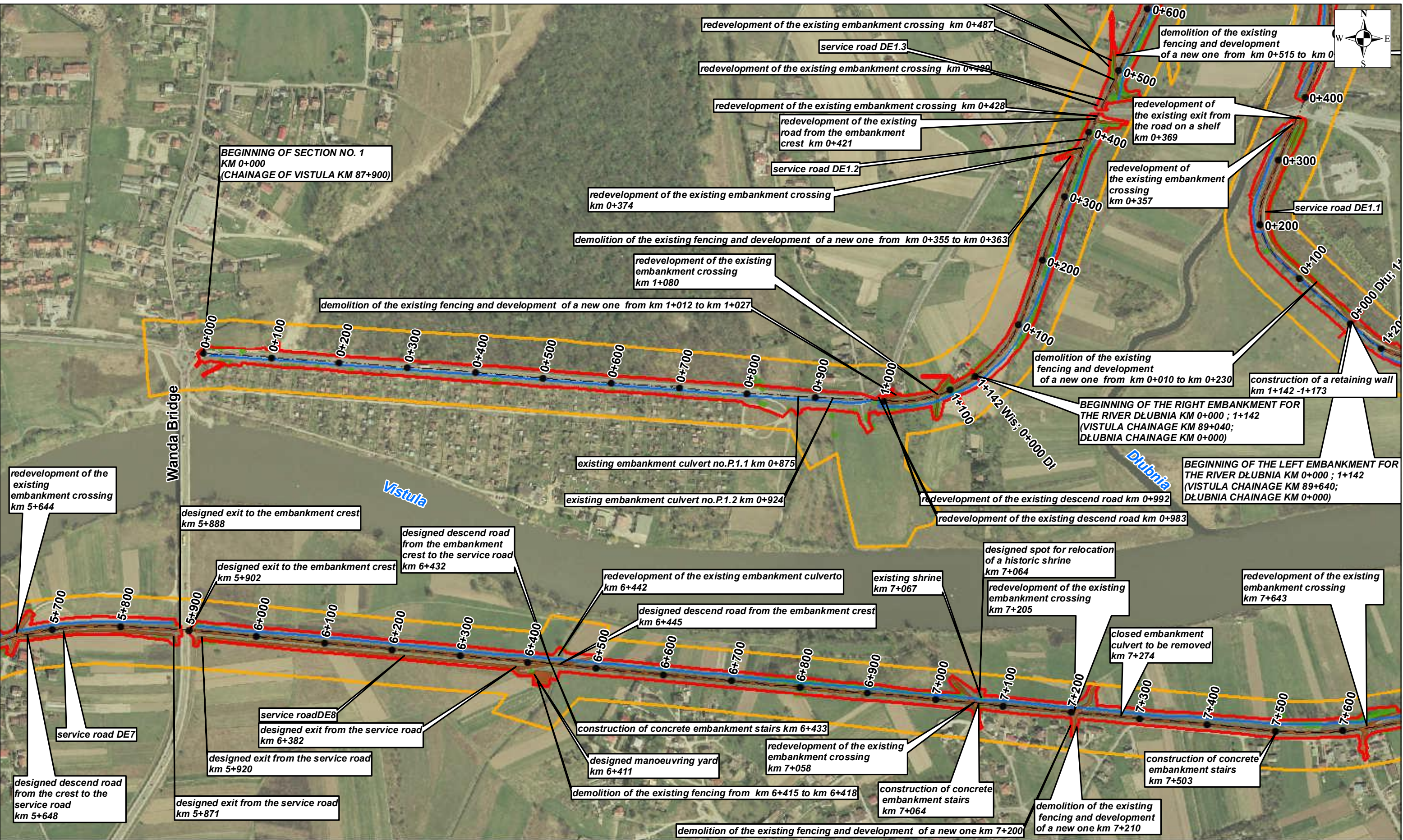
Appendix no. 10: Map with location of the Contracts' elements

Contract 3A.1 Modernization of Vistula embankments in Cracow
Works Contract 3A.1/1

- Section 1** - The left embankment of the Vistula river from Wanda bridge to the Przewóz barrage, including the backwater embankment of the Dłubnia river - Sheet 4, 5, 6
- Section 2** - The left embankment of the Vistula river from Przewóz barrage to Suchy Jar - Sheet 7, 8

Works Contract 3A.1/2

- Section 3** - The right embankment of the Vistula river from Dabie to the Przewóz barrage - Sheet 1, 2, 3, 4, 6, 7



SHEET 4 Appendix no. 10: Map with location of the Contracts' elements

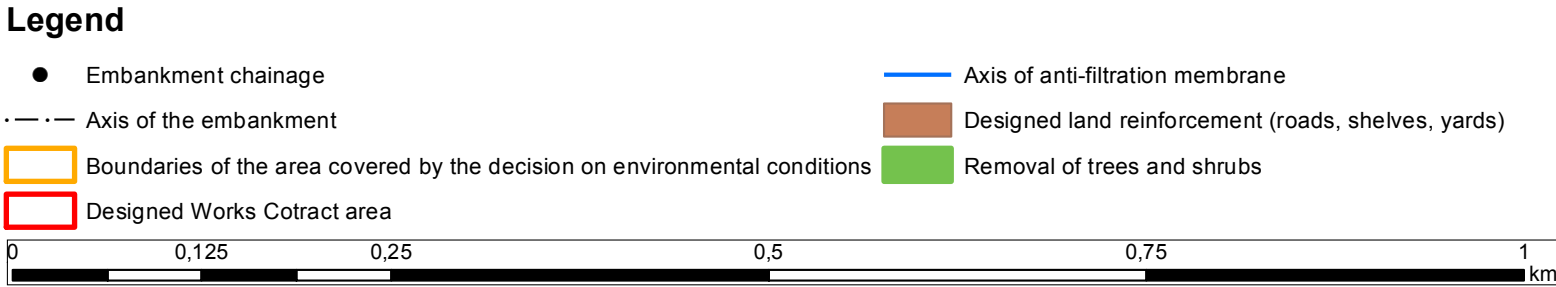
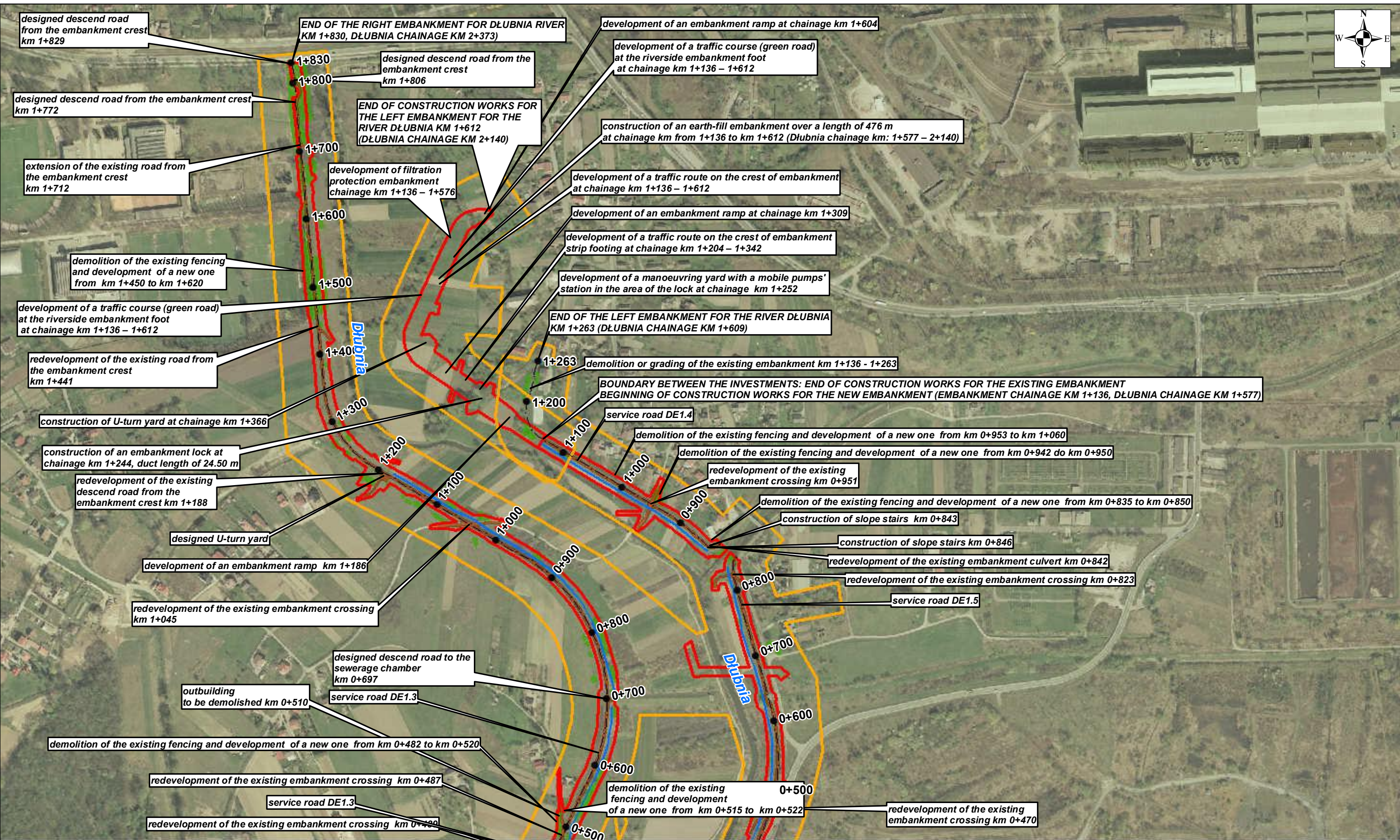
Contract 3A.1 Modernization of Vistula embankments in Cracow
Works Contract 3A.1/1

Section 1 - The left embankment of the Vistula river from Wanda bridge to the Przewóz barrage, including the backwater embankment of the Dłubnia river - Sheet 4, 5, 6

Section 2 - The left embankment of the Vistula river from Przewóz barrage to Suchy Jar - Sheet 7, 8

Works Contract 3A.1/2

Section 3 - The right embankment of the Vistula river from Dabie to the Przewóz barrage - Sheet 1, 2, 3, 4, 6, 7



SHEET 5 **Appendix no. 10: Map with location of the Contracts' elements**

Contract 3A.1 Modernization of Vistula embankments in Cracow

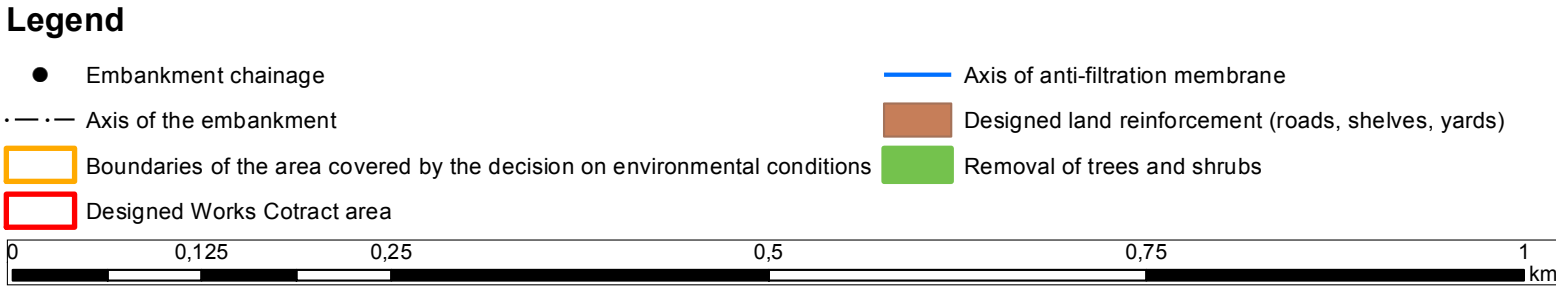
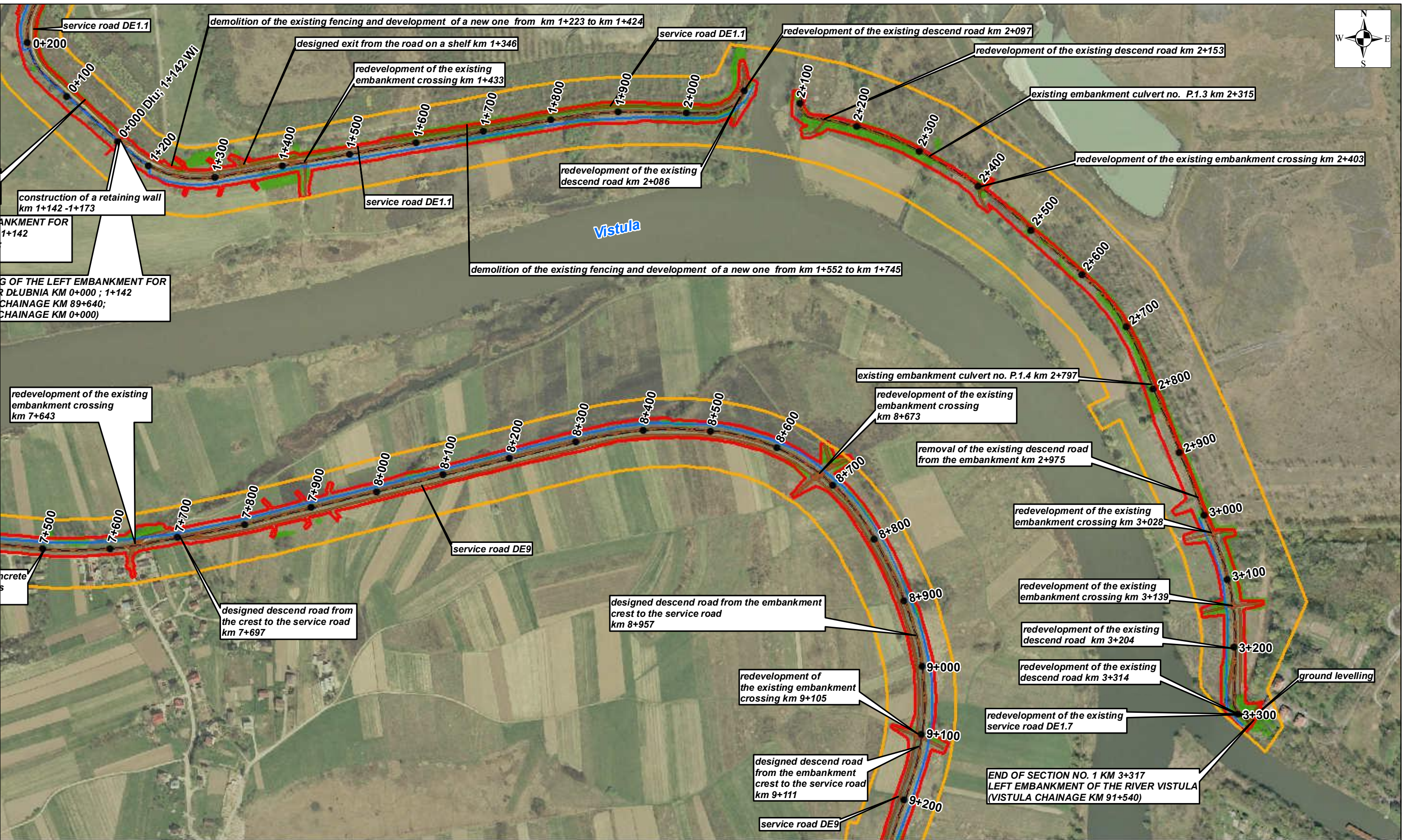
Works Contract 3A.1/1

Section 1 - The left embankment of the Vistula river from Wanda bridge to the Przewóz barrage, including the backwater embankment of the Dłubnia river - Sheet 4, 5, 6

Section 2 - The left embankment of the Vistula river from Przewóz barrage to Suchy Jar - Sheet 7, 8

Works Contract 3A.1/2

Section 3 - The right embankment of the Vistula river from Dabie to the Przewóz barrage - Sheet 1, 2, 3, 4, 6, 7



SHEET 6 **Appendix no. 10: Map with location of the Contracts' elements**

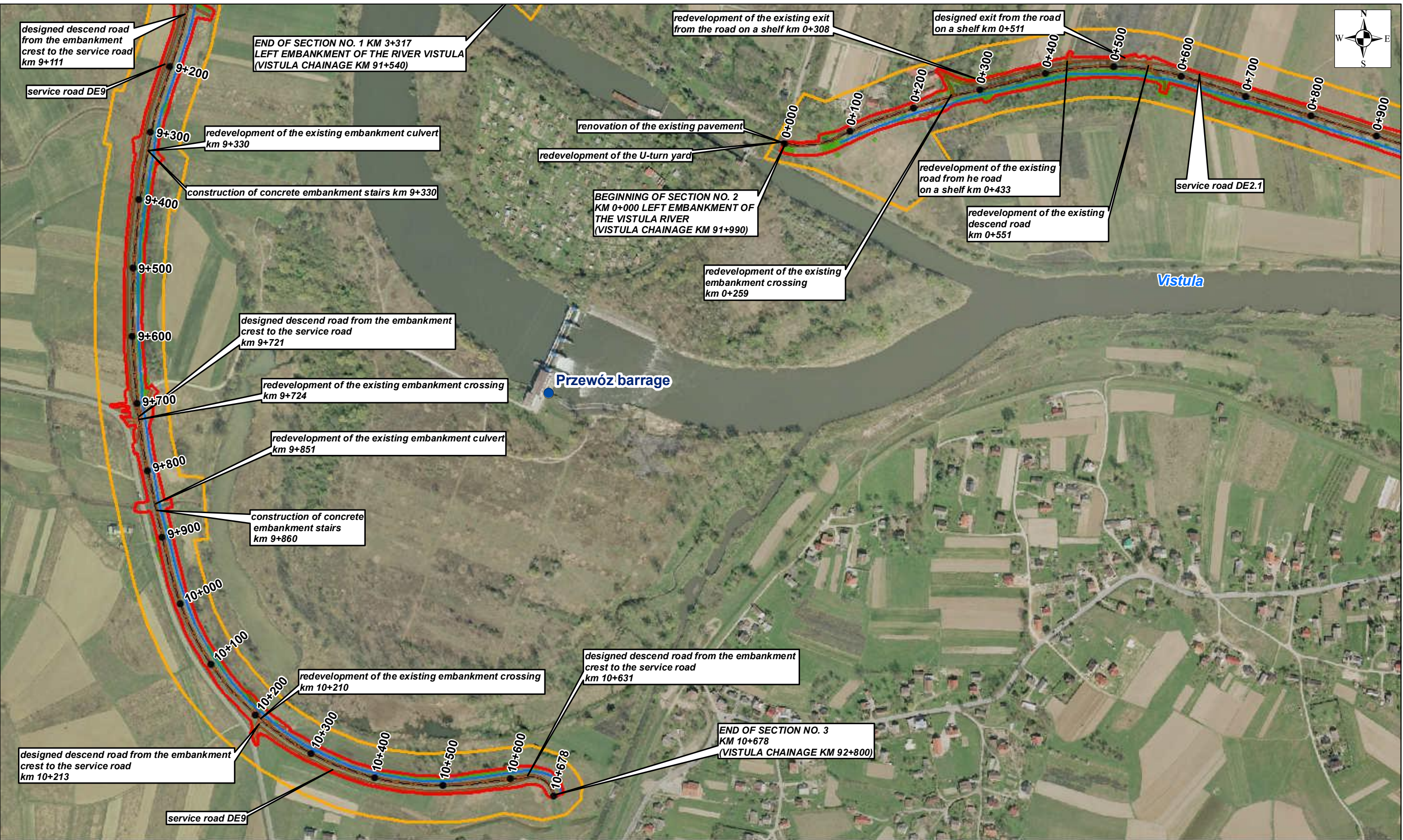
Contract 3A.1 Modernization of Vistula embankments in Cracow
Works Contract 3A.1/1

Section 1 - The left embankment of the Vistula river from Wanda bridge to the Przewóz barrage, including the backwater embankment of the Dłubnia river - Sheet 4, 5, 6

Section 2 - The left embankment of the Vistula river from Przewóz barrage to Suchy Jar - Sheet 7, 8

Works Contract 3A.1/2

Section 3 - The right embankment of the Vistula river from Dabie to the Przewóz barrage - Sheet 1, 2, 3, 4, 6, 7



Legend

●

 Embankment chainage

— · —

 Axis of the embankment

Boundaries of the area covered by the decision on environmental conditions

Designed Works Cotract area

Axis of anti-filtration membrane

Designed land reinforcement (roads, shelves, yards)

Removal of trees and shrubs

0

0,125

0,25

0,5

0,75

1

km

SHEET 7

Appendix no. 10: Map with location of the Contracts' elements

Contract 3A.1 Modernization of Vistula embankments in Cracow

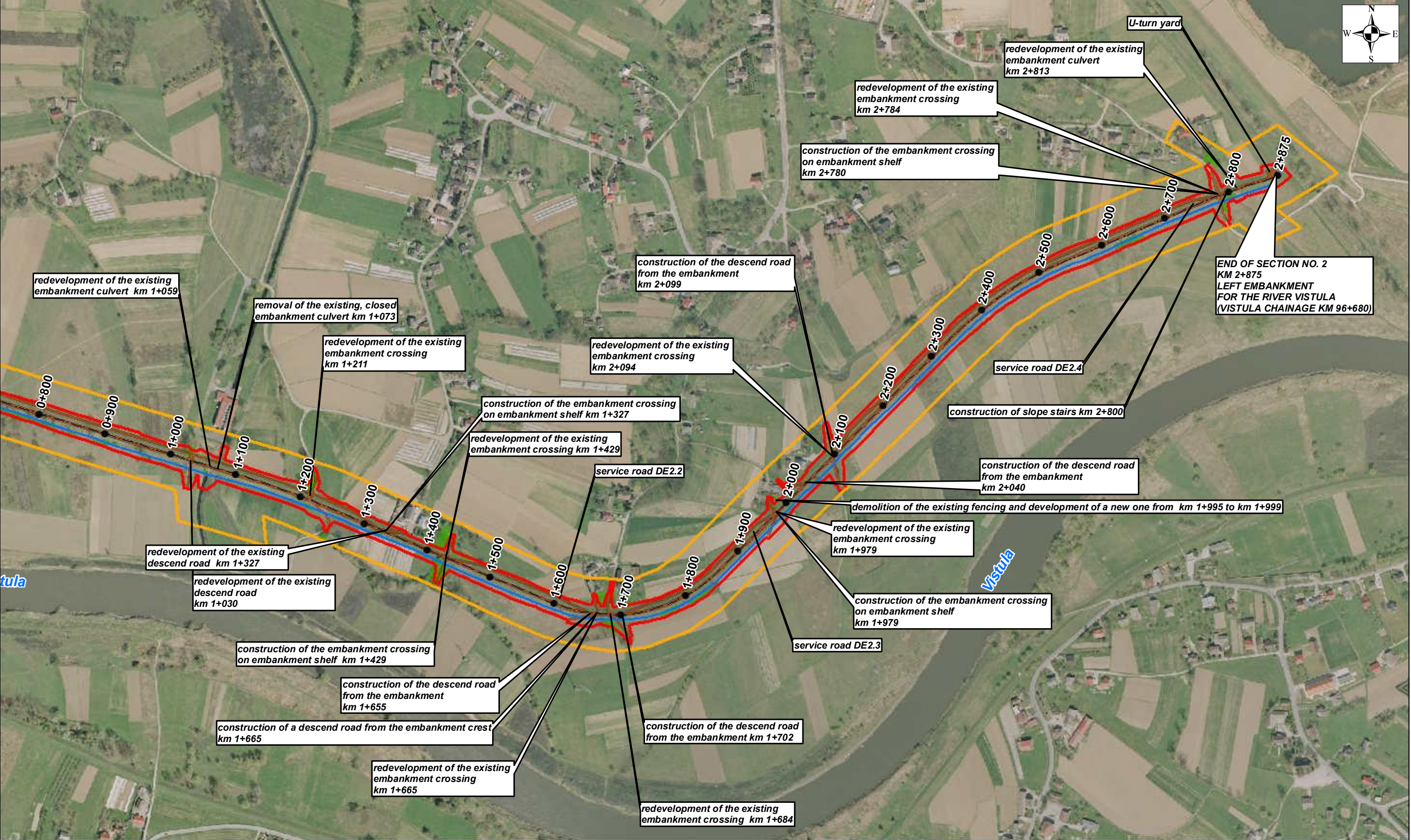
Works Contract 3A.1/1

Section 1 - The left embankment of the Vistula river from Wanda bridge to the Przewóz barrage, including the backwater embankment of the Dłubnia river - Sheet 4, 5, 6

Section 2 - The left embankment of the Vistula river from Przewóz barrage to Suchy Jar - Sheet 7, 8

Works Contract 3A.1/2

Section 3 - The right embankment of the Vistula river from Dabie to the Przewóz barrage - Sheet 1, 2, 3, 4, 6, 7



●

 Embankment chainage

— · —

 Axis of the embankment

Boundaries of the area covered by the decision on environmental conditions

Designed Works Contract area

Axis of anti-filtration membrane

Designed land reinforcement (roads, shelves, yards)

Removal of trees and shrubs

0

0,125

0,25

0,5

0,75

1

km

SHEET 8

Appendix no. 10: Map with location of the Contracts' elements

Contract 3A.1 Modernization of Vistula embankments in Cracow

Works Contract 3A.1/1

Section 1 - The left embankment of the Vistula river from Wanda bridge to the Przewóz barrage, including the backwater embankment of the Dłubnia river - Sheet 4, 5, 6

Section 2 - The left embankment of the Vistula river from Przewóz barrage to Suchy Jar - Sheet 7, 8

Works Contract 3A.1/2

Section 3 - The right embankment of the Vistula river from Dabie to the Przewóz barrage - Sheet 1, 2, 3, 4, 6, 7